



## **TPMS Product Brochure**





## About Tyresure

Tyresure is a leading distributor of Tyre Pressure Monitoring System (TPMS) products. With distribution centres in the UK and Germany, Tyresure can deliver its comprehensive range of TPMS products throughout Europe.

Tyresure works closely with established business partners, including the primary manufacturer of its branded products, Hamaton, and diagnostic tool market leader, ATEQ, to ensure Tyresure continues to offer the most up-to-date TPMS solutions.

## TPMS Product Range

Tyresure offers a complete range of innovative TPMS products, from OE and aftermarket sensors and replacement parts, to diagnostic tools manufactured by ATEQ.



## The NFC-Enabled Universal Sensor



### What Sets this Sensor Apart?

Users can configure and program this sensor with their smartphones.\*

This solution is perfect for DIYers, wheel assemblers and companies looking to capitalise on TPMS business opportunities.

### What is NFC?

NFC is a short-range wireless technology that allows compatible devices to communicate. Its most common use on a smartphone is making quick and easy payments with Apple Pay or Google Pay.

## NFC Benefits & App Features

### Superfast Configuration

The app can configure Hybrid NFC sensors in a tap, outperforming TPMS tools.

### Two Ways to Configure

Create a new ID and use any TPMS tool to relearn a vehicle. Alternatively, manually enter an existing OE sensor ID and skip the relearn process altogether.

### No Potential for Error

Users can rest assured they have configured the correct sensor thanks to the short-range transmission of NFC.

### Free to Download & Update

Say goodbye to subscription fees and manual updates. The app updates itself, so users do not have to!\*\* As a result, the latest vehicle coverage is always at your fingertips.



Tyresure NFC

Aside from NFC, the T-Pro Hybrid NFC includes the same features as the Hybrid 3.5 Sensor (on page 3).

**Silver Clamp-In:** [TYR-S516](#)

**Snap-In:** [TYR-S517](#)

**Black Clamp-In:** [TYR-S518](#)

**Graphite Clamp-In:** [TYR-S519](#)

\*Available for NFC-enabled Android phones and the iPhone 7 or newer with a minimum of iOS 15.

\*\*Mobile data or a Wi-Fi connection is required.







## Configurable & Programmable Universal Sensors

- **Configurable:** configure in 1-3 seconds, as protocols covering a high percentage of vehicles are stored on the sensor
- **Programmable:** add new protocols as they become available, future-proofing stock
- Compatible with leading TPMS tools, including those manufactured by ATEQ
- Designed for an optimal fit with OE and aftermarket wheels
- Powerful Maxell battery and the latest NXP chip
- 3-year sensor warranty\*

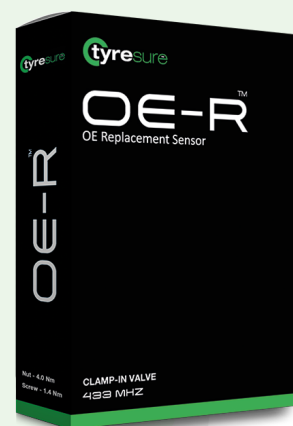


**Silver Clamp-In:** [TYR-S500](#)  
**Black Clamp-In:** [TYR-S502](#)

**Snap-In:** [TYR-S501](#)  
**Graphite Clamp-In:** [TYR-S509](#)

## OE Replacement Sensors

- Cost-efficient solution to replace Original Equipment (OE) sensors
- No programming required - fully functional following a TPMS relearn procedure
- Designed for an optimal fit with OE and aftermarket wheels
- Powerful Maxell battery and the latest NXP chip
- 3-year sensor warranty\*



\*While sensors have a 3-year warranty, valves are warranted for two years. However, valves must be serviced/replaced when the tyre bead is broken to uphold the sensor warranty.

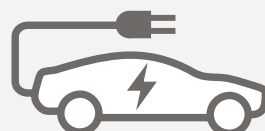


## Tesla BLE Sensor

The T-Pro Hybrid BLE is a direct replacement for the Sysgration BLE (Bluetooth Low Energy) sensor used by Tesla vehicles. This aftermarket solution also employs BLE to alert the ECU when tyre pressure drops and is pre-programmed, enabling technicians to skip the programming step.

Coverage:

- Tesla Model 3 (Oct 2020+)
- Tesla Model S (Jun 2021+)
- Tesla Model X (Oct 2021+)
- Tesla Model Y (Oct 2020+)



**Silver Clamp-In:** [TYR-S587](#)

**Black Clamp-In:** [TYR-S589](#)

**Graphite Clamp-In:** [TYR-S590](#)



## Valve Options for Tyresure Sensors



**Silver Clamp In:**  
[TYR-V077\\_10](#)



**Snap-In:**  
[TYR-V012\\_10](#)



**Black Clamp-In:**  
[TYR-V078\\_10](#)



**Graphite Clamp-In:**  
[TYR-V084\\_10](#)

The T-Pro family of sensors have four valve stem options: the most popular aftermarket Snap-In and three Clamp-In valves designed to complement the alloy wheel finish.

Clamp-In valves are anodized, and all valve cores have nickel plating to strengthen the corrosion resistance. The Clamp-In nut can be removed/attached over the cap to accelerate sensor installation and includes an anti-scratch washer to protect the wheel surface when tightening.

## Starter Kit Pro

The Starter Kit Pro contains a selection of the most popular replacement parts, which cover 99% of European vehicles with direct TPMS.

With 52 valves and 12 service kits (for OE and aftermarket sensors), the Starter Kit Pro alleviates concerns about not having the correct replacement parts.

For extra convenience, garages can order the contents of the Starter Kit Pro in individual boxes of 10 as required.



PN: [TYR-P020](#)



PN: [TYR-T006](#)

## Essential Tools For TPMS Servicing

The Tool Kit and Carry Case is an essential piece of equipment for garages, as it contains all the tools required to service valves successfully.

- The tool range is compatible with every valve in the market
- Overcome varying torque settings among valves and service kits by having the correct tools on hand, reducing the risk of damage

**Contents:**

- Calibrated Torque Tool, including:
  - o 7 mm, 11 mm and 12 mm Hex Sockets
  - o 10, 15 and 20 Torx Bits
- [Valve Core Torque Tool](#)
- [Grommet Removal Tool](#)
- [T6 Torx Screwdriver](#)





TPMS Diagnostic Tools

Standard Features

- Read and activate 100% of OE and aftermarket sensors
- Manually enter IDs and copy a set of wheels
- Unlock the ECU (necessary for Lexus and Toyota models)\*
- Manual relearn procedures
- ATEQ's Live Sensor platform (updates sensor information in real-time)
- ATEQ's Sync-ID technology (increases OBDII relearn coverage to over 90%)\*
- Test Remote Keyless Entry (RKE)
- Look up sensor part numbers
- Easy-to-use icon-driven navigation and comprehensive language selector

Hamaton & ATEQ Diagnostic Tools | The Differences

	Hamaton	ATEQ
Configure/Program	EU-Pro Hybrid and T-Pro Hybrid Sensors	All Popular Universal Sensors
Multi-programming	EU-Pro Hybrid and T-Pro Hybrid Sensors	All Popular Universal Sensors
Free Software Subscription	5 Years	1 Year (VT37 and VT67) 3 Years (VT57)
Warranty	2 Years	1 Year (VT37 and VT57) 2 Years (VT67)

The Hamaton H57\*\* and Hybrid HT can be upgraded to configure/program other popular universal sensors. See page 9 for more information.



\*Excludes the ATEQ VT37.  
\*\*If users upgrade the sensor coverage, the subscription period will revert to the remaining time offered with the equivalent ATEQ tool.

TPMS Diagnostic Tool - Additional Features

ATEQ VT67

- 8" colour touchscreen
- Bluetooth Ready
- Update via Wi-Fi
- Customer management
  - Capture images of vehicle parts
  - Email service records
  - Storage: 12GB
- TPMS diagnostics
  - Retrieve DTCs
  - ID Match (compare sensor IDs to IDs on the ECU)
- Tyre management
  - Record DOT codes (date and place of tyre manufacture)
  - Change tyre pressure placard value
  - Measure tyre tread depth\*
- Vehicle databases: Australasia, Europe, Japan and North America
- OBDII port locations
- OBDII connector included



PN: ATE-D084

Hamaton H57 & ATEQ VT57

- 4.3" colour touchscreen
- Update via Wi-Fi
- Customer management
  - Store up to 800 service records
- TPMS diagnostics
  - Retrieve DTCs
- Tyre management
  - Record DOT codes (date and place of tyre manufacture)
  - Change tyre pressure placard value
  - Measure tyre tread depth\*
- Vehicle databases: Australasia, Europe, Eurasia, Japan, Korea and North America
- OBDII port locations
- OBDII module and connector included



PN: HAM-D081



PN: ATE-D081

\*Tyre Tread Depth Gauge sold separately.







PN: HAM-D076

### Hamaton Hybrid HT

- 2.8" colour display
- Update via Wi-Fi
- Customer management
  - Store up to 800 service records
- TPMS diagnostics
  - ID Match (compare sensor IDs to IDs on the ECU)
- Tyre management
  - Change tyre pressure placard value
  - Measure tyre tread depth\*
- Vehicle databases: Australasia, Europe, Eurasia and North America
- OBDII connector included



### Hamaton H47

- 2.8" colour display
- Tyre management
  - Change tyre pressure placard value
- Vehicle databases: Europe, Eurasia and North America
- OBDII connector included

PN: HAM-D065



### ATEQ VT37

- 2.8" colour display
- Vehicle databases: Australasia, Europe, Eurasia and North America

PN: ATE-D079

\*Tyre Tread Depth Gauge sold separately.

## Commercial Vehicle TPMS



PN: HTS-T01A

Our simple and easy to use Truck 1.0 TPMS solution fits seamlessly into your existing tyre changing processes, and is compatible with both OE and aftermarket Truck TPMS valves.

- Mandatory for new M1, M2, M3, N1, N2, N3, O3, O4 EU vehicle registrations from July 2024.
- European database of trucks, trailers, and buses, with new protocols automatically added.
- Compatible with ATEQ's VT Truck 2.0, as well as H56/57 and VT56/57 tools with a truck upgrade.
- 24-month warranty or 100,000-km, whichever comes first.
- Cutting-edge battery and the latest NXP chip.
- 433MHz frequency required for EU TPMS systems.

### Compatible Valves:

[6-460](#) | [6-461](#) | [6-462](#) | [6-463](#) | [6-464](#) | [6-465](#)



PN: ATE-D091

### ATEQ VT Truck 2.0 with OBD Power Converter

The ATEQ VT Truck 2.0 offers a range of functions specifically designed for the maintenance of trucks, buses, coaches, trailers, and light trucks.

- 2.8" colour display
- Program aftermarket sensors designed for heavy-duty commercial vehicles.
- Global database for trucks, buses, coaches, trailers, and light trucks.
- Easily read sensors, even in twin wheels, up to 22 wheels.
- Tyre management
  - Measure tyre tread depth\*
- OBDII capability for on-board diagnostics.
- WiFi & real time updates, powered by Live Sensor™.
- One-year software subscription.

\*Tyre Tread Depth Gauge sold separately.

## Truck Upgrades | Hamaton H56/57 & ATEQ VT56/57

Diagnostic tool users can purchase a truck upgrade, enabling them to read and diagnose TPMS systems on commercial vehicles.

This upgrade allows users to service both passenger and commercial vehicles without investing in another tool. Upgrading your tools unlocks a separate menu solely dedicated to commercial vehicles, including many features ideal for TPMS maintenance.

Includes:

- Software Upgrade
- OBD Power Converter
- +1 Year Software Updates



VT57: ATE-D097 | H57: HAM-D097 | VT56: ATE-D096 | H56: HAM-D096



## Tyre Tread Depth Gauge

This ergonomic tool accessory quickly captures three precise measurements (inner, centre and outer) of up to seven tyres per vehicle.

Besides improved road safety, identifying a worn tyre enables garages to upsell a replacement.

Compatible with the following diagnostic tools: VT67, VT57, H57 and Hybrid HT.



PN: ATE-D027

## Universal Sensor Upgrade

Increase the universal sensor coverage of your Hamaton diagnostic tool to include the following brands: ALCAR Sensor, ALLIGATOR Sens.it, BH SENS IntelliSens, VDO REDI-Sensor and SCHRADER EZ-sensor.

**H57:** HAM-D086\*    **Hybrid HT:** HAM-D078

\*If users upgrade the sensor coverage, the subscription period will revert to the remaining time offered with the equivalent ATEQ tool.

## Software Updates

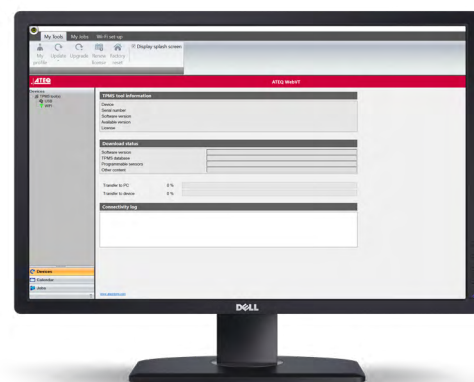
Having a valid software subscription and keeping diagnostic tools updated is essential. Software updates provide new features and increased coverage meaning garages can service more vehicles.

If your software licence has expired or is ending soon, contact us to discuss your options.

Install WebVT to download the latest software update. VT67, VT57, H57 and Hybrid HT users can perform subsequent updates via Wi-Fi.



[www.tyresure-tpms.com/webvt](http://www.tyresure-tpms.com/webvt)



## Bundle Offers\*

Our fantastic bundle deals combine the H47/57 TPMS and tyre management tools with configurable and programmable Hybrid 3.5 sensors.

Bundle options include:

- Hamaton H47 or Hamaton H57 TPMS tool
- 8, 16 or 24 Hybrid 3.5 sensors

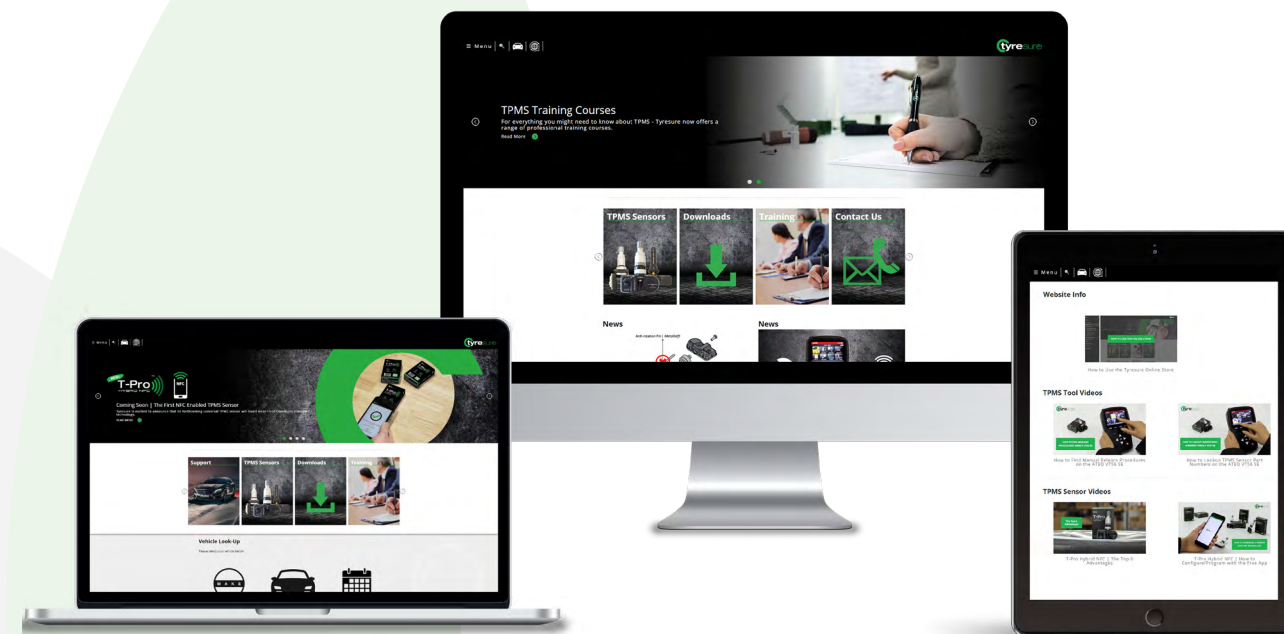
You can mix and match the valve stems. Choose from Silver Clamp-In, Black Clamp-In, Graphite Clamp-In and Snap-In.\*\*



**Find out more on our Bundles Page on the Tyresure Website**

\*Available while stocks last.

\*\*Please specify which valve stems you want in the extra information box at checkout, or the quantity will be split equally between Silver Clamp-In and Snap-In.



## Online Shop & Support

On our website, visitors can find answers to the most asked questions surrounding TPMS and a downloads page, including fitment instructions, how-to guides and product comparison charts.

### Vehicle Look-Up

The Tyresure website is home to our Vehicle Look-Up tool designed to help users quickly identify replacement TPMS parts for vehicles. Just enter the make, model and year of manufacture to begin.

### Login to Unlock Exclusive TPMS Info & Much More

As well as up-to-date info about of our TPMS product range, users can take advantage of step-by-step relearn procedures for countless vehicles. This industry-leading data is utilised to assist anyone fitting a new sensor and help ensure the vehicle's TPMS is in good working order.

Our online shop allows users to place an order whenever is convenient for them. Users can also gain access to (account specific) live pricing and their order history.

## Let's Stay Connected

Follow our social media channels or visit our website to and be among the first to hear the latest business and product news.







[www.tyresure-tpms.com](http://www.tyresure-tpms.com)



UK: [info@tyresure.com](mailto:info@tyresure.com)  
DE: [info.gmbh@tyresure.com](mailto:info.gmbh@tyresure.com)